

Horizon taking the environmental impact seriously

In everything we do, our aim is to ensure we act ethically and responsibly by adopting a high level of Corporate Social Responsibility. This is embedded in all our practices to the benefit of our customers, employees, suppliers and the communities within which we operate.

Throughout all Connection's processes, we consider their impact upon the environment, from the initial design of the product, through its manufacture and delivery, right up to its disposal when it has reached the end of its useful life.

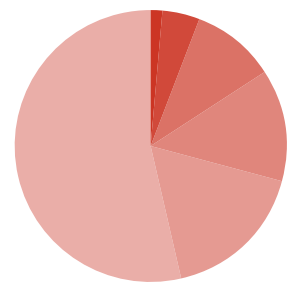
Horizon SHZ1 and SHZ2

Composition right-hand and left-hand wave bench

- 22% Recycled Content
- 100% Recyclability
- 60.5kg CO²e Carbon Footprint



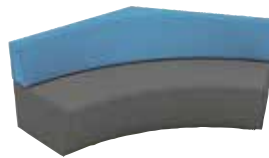
- 0.1% Steel
- 4.5% Fabric
- 10.2% Birch (wood)
- 13.6% Plywood
- 17.4% CMF* RECY
- 54.3% MDF



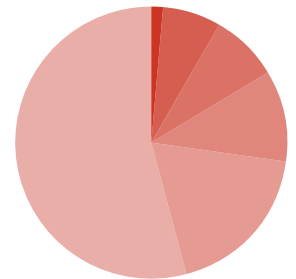
Horizon SHZ5

Composition 120° 1200 bench

- 26% Recycled Content
- 100% Recyclability
- 80.2kg CO²e Carbon Footprint



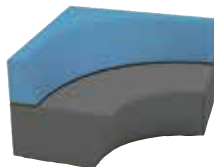
- 0.1% Steel
- 7.0% Fabric
- 8.2% Birch (wood)
- 11.0% Plywood
- 19.0% CMF* RECY
- 54.8% MDF



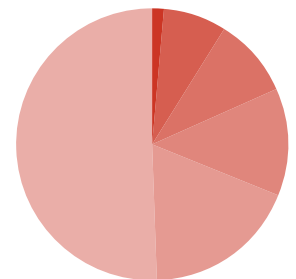
Horizon SHZ11

Composition 90° bench

- 26% Recycled Content
- 100% Recyclability
- 70.0kg CO²e Carbon Footprint



- 0.1% Steel
- 7.7% Fabric
- 9.6% Birch (wood)
- 12.8% Plywood
- 18.6% CMF* RECY
- 51.2% MDF



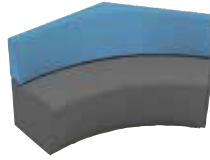
*Combustion modified foam



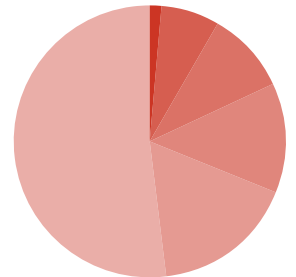
Horizon SHZ6

Composition 120° 900 bench

- 25% Recycled Content
- 100% Recyclability
- 66.1kg CO²e Carbon Footprint



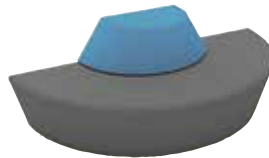
- 01% Steel
- 7.2% Fabric
- 9.8% Birch (wood)
- 13.1% Plywood
- 17.3% CMF* RECY
- 52.5% MDF



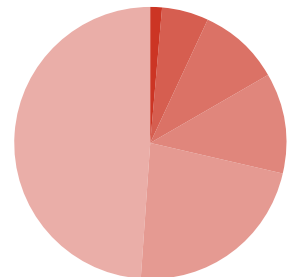
Horizon SHZ10

Composition large D-end bench

- 28% Recycled Content
- 100% Recyclability
- 70.4kg CO²e Carbon Footprint



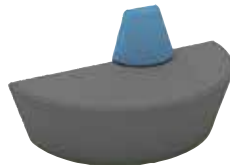
- 01% Steel
- 5.6% Fabric
- 9.9% Birch (wood)
- 12.1% Plywood
- 22.9% CMF* RECY
- 49.5% MDF



Horizon SHZ9

Composition small D-end bench

- 20% Recycled Content
- 100% Recyclability
- 51.6kg CO²e Carbon Footprint



- 01% Steel
- 5.2% Fabric
- 11.7% Birch (wood)
- 15.7% Plywood
- 15.1% CMF* RECY
- 52.2% MDF

