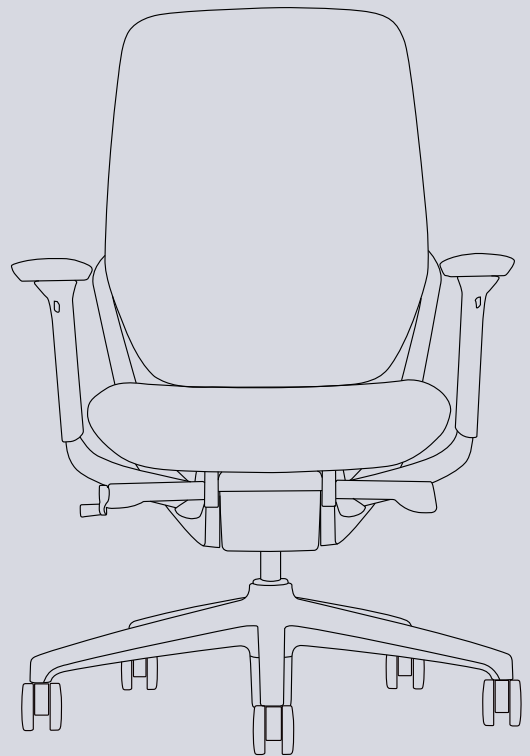

aspect 

Merge
Specification
Sheet.





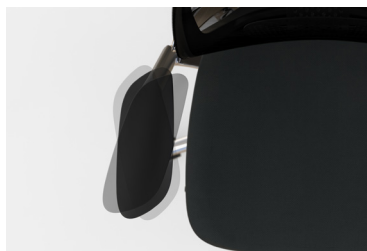
Key features.

The Merge chair adapts to the human body's form, focusing on the ergonomics of the individual to ensure postural support and all-day comfort.



Lumbar support

Contoured black mesh backrest with 80mm of lumbar adjustment.



4D adjustable armrests

Can be adjusted 4 separate ways on 3 pivot axes and is also height adjustable.



Tension adjustment

For further comfort, the backrest can be adjusted to the user's desired tension.



Seat slide adjustment

Five different seat depth presets (100mm total) with pull/push adjustments.



Tilt action

Simple, weight-specific tilt action with fine adjustment tension recline. Four preset backrest positions.

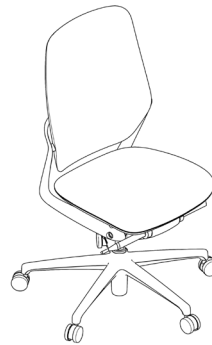
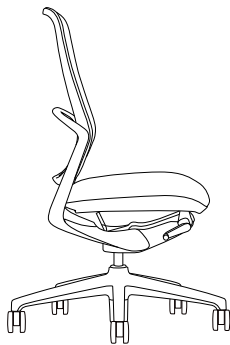
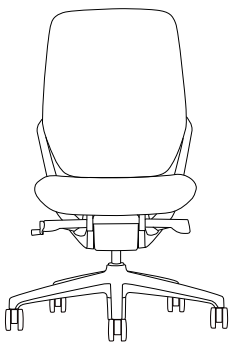


Solid base + unrestricted movement

Heavy duty base and mechanism constructed from polished alloy. This is paired with large 60mm castors for ease of movement.

Product specifications.

Merge chair



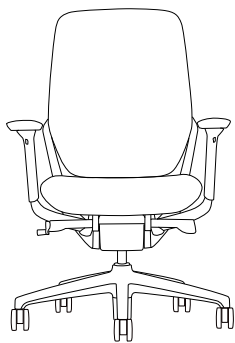
Overall dimensions:

Height: 1004-1124mm
Width: 750mm
Depth: 720mm

Seat dimensions:

Height: 475-575mm
Width: 500mm
Depth: 470mm

Merge chair with arms



Overall dimension:

Height: 1004-1124mm
Width: 750mm
Depth: 720mm

Seat dimensions:

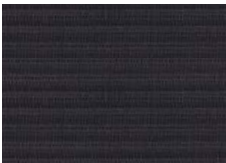
Height: 475-575mm
Armrests: 637-840mm
Width: 500mm
Depth: 470mm

Arm rest dimensions:

Height: 637-840mm
Width: 457-525mm

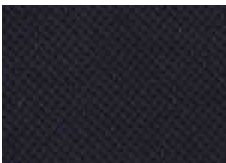
Product specifications.

Back mesh fabric options



Piano
LN04 *

Seat pad - Breathe fabric options



A43-1*



A43-11



A43-13



A43-9



A43-12



A43-2



A43-10



A43-14

Frame finish options



*Polished



*Black

* Stocked options



We are creative problem solvers that champion original thinking. We love sharing ideas, taking something and making it better together.

Please get in touch with us, we'd love to discuss your project.

New Zealand
0800 323 220
info@aspectfurniture.com

Australia
1800 696 334
infoau@aspectfurniture.com

aspectfurniture.com