

connection.uk.com

connection
space that works



Horizon
designed by Roger Webb Associates

Product Guide

Horizon

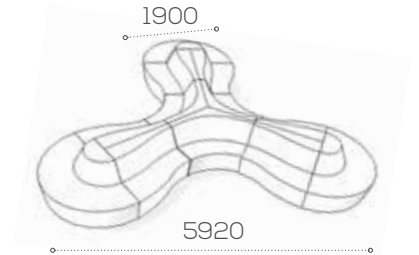
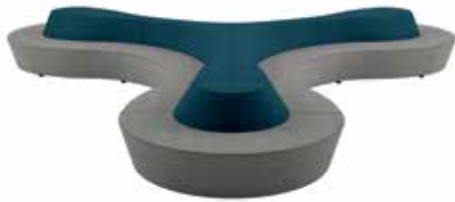


Horizon

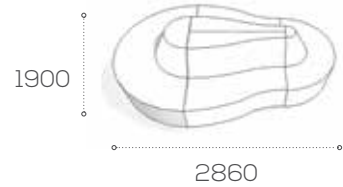
A truly modular seating system made to fit your space, style & imagination

Example configurations (please note dimensions are approximate)

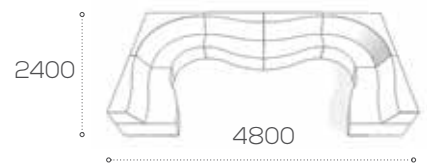
Triform



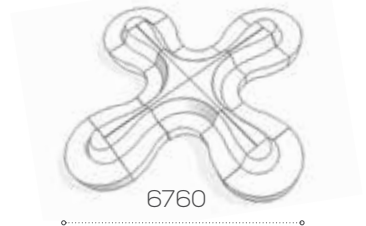
Island



Wave



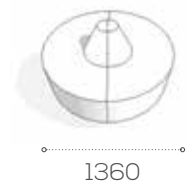
Quadrant



L-shape



Circle



Horizon taking the environmental impact seriously

In everything we do, our aim is to ensure we act ethically and responsibly by adopting a high level of Corporate Social Responsibility. This is embedded in all our practices to the benefit of our customers, employees, suppliers and the communities within which we operate.

Throughout all Connection's processes, we consider their impact upon the environment, from the initial design of the product, through its manufacture and delivery, right up to its disposal when it has reached the end of its useful life.

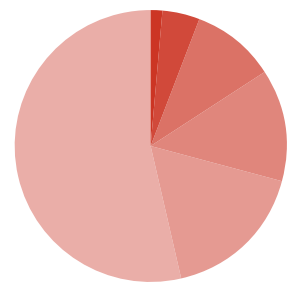
Horizon SHZ1 and SHZ2

Composition right-hand and left-hand wave bench

- 22% Recycled Content
- 100% Recyclability
- 60.5kg CO²e Carbon Footprint



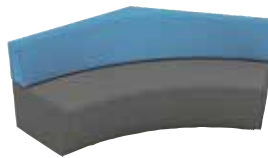
- 0.1% Steel
- 4.5% Fabric
- 10.2% Birch (wood)
- 13.6% Plywood
- 17.4% CMF* RECY
- 54.3% MDF



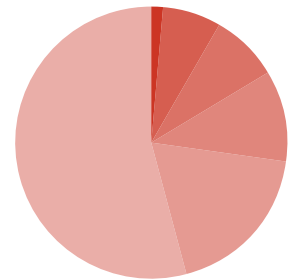
Horizon SHZ5

Composition 120° 1200 bench

- 26% Recycled Content
- 100% Recyclability
- 80.2kg CO²e Carbon Footprint



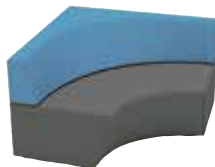
- 0.1% Steel
- 7.0% Fabric
- 8.2% Birch (wood)
- 11.0% Plywood
- 19.0% CMF* RECY
- 54.8% MDF



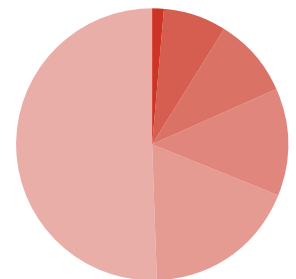
Horizon SHZ11

Composition 90° bench

- 26% Recycled Content
- 100% Recyclability
- 70.0kg CO²e Carbon Footprint



- 0.1% Steel
- 7.7% Fabric
- 9.6% Birch (wood)
- 12.8% Plywood
- 18.6% CMF* RECY
- 51.2% MDF



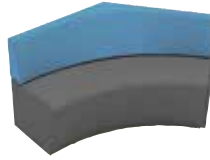
*Combustion modified foam



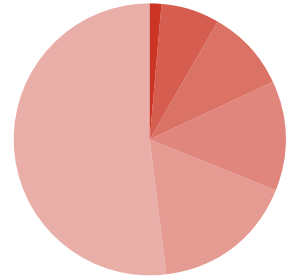
Horizon SHZ6

Composition 120° 900 bench

- 25% Recycled Content
- 100% Recyclability
- 66.1kg CO²e Carbon Footprint



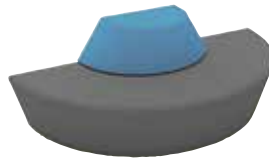
- 01% Steel
- 7.2% Fabric
- 9.8% Birch (wood)
- 13.1% Plywood
- 17.3% CMF* RECY
- 52.5% MDF



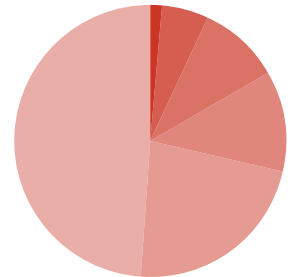
Horizon SHZ10

Composition large D-end bench

- 28% Recycled Content
- 100% Recyclability
- 70.4kg CO²e Carbon Footprint



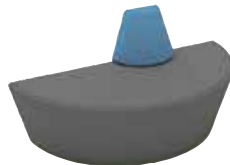
- 01% Steel
- 5.6% Fabric
- 9.9% Birch (wood)
- 12.1% Plywood
- 22.9% CMF* RECY
- 49.5% MDF



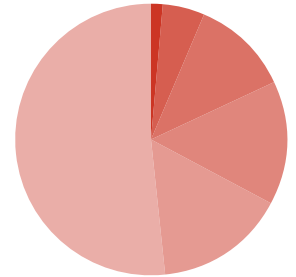
Horizon SHZ9

Composition small D-end bench

- 20% Recycled Content
- 100% Recyclability
- 51.6kg CO²e Carbon Footprint



- 01% Steel
- 5.2% Fabric
- 11.7% Birch (wood)
- 15.7% Plywood
- 15.1% CMF* RECY
- 52.2% MDF





A large, stylized, dark grey 'C' logo is centered on the page. It consists of a thick outer ring and a smaller inner circle, both with rounded ends, creating a sense of movement and connection.

Head Office
Dogley Mills
Penistone Road
Fenay Bridge
Huddersfield
West Yorkshire
HD8 0LE

Tel: 01484 600 100
sales@connection.uk.com

London Showroom
31 Great Sutton Street
Clerkenwell
London
EC1V 0NA

Tel: 020 7253 9877
www.connection.uk.com